



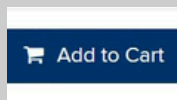
SecureW2 Installation for Linux



Steps to Download SecureW2



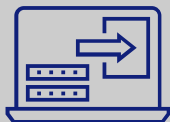
You need to install **SecureW2** to continue connecting to the wired Yale network seamlessly.



Navigate to the [Yale Software Library](#) and search "SecureW2". Click "Add to Cart", then click the cart icon at the top of the screen.



Click 'Checkout', then 'Continue', then 'Download', and choose your operating system (Linux)



Extract the files and run SecureW2_JoinNow.run to install it. Enter your Net ID & Password when prompted



A pop-up message will indicate a successful connection. If you see "Network not in Range" click 'Continue'



Still need help?

Call the ITS Help Desk at **203-432-9000** and mention **ENAWired** for prompt assistance in authenticating on Yale's secure network